



WEEKEND HOUSE AT AALLOO

LOCATION: GANDHINAGAR, GUJARAT
 PLOT SIZE: 135 M X 145 M | BUILT UP AREA: 3500 SQ.M
 PHOTOGRAPHY COURTESY: RAHUL ZOTA

OVERVIEW Weekend House at Aalloo engaged with a pristine, forested site, located on the banks of the Sabarmati river near Ahmedabad. Construction techniques adopted helped in preserving the existing ecology of the site with limited interference. The built form sits in the natural setting, disposition and movement to experience the exterior space and unwrapping the majestic site. The section develops by scooping out a rectangular void at the plateau's edge. The landform with imminent built-form makes an imprint into the topography. Into this, floors, walls & columns are introduced to form the core of the house.

As linear blocks, the house, pool and water tower are oriented along different coordinate axes to engage three-dimensionally with the site. The site slopes down from west to east guided by water bodies. Facing the main river, the residence sits along the slope with built mass held towards the red side of the site. The prime feature inspired from the site is the hyperbolic slab of the residence which runs along the river, bringing the outdoors indoors. The project uses a composite structural system. The RCC roof is cast manually, using pinewood shuttering. The material is thickened to integrate furniture activating habitable zones. Elsewhere, they are made comparatively thinner to wrap around the structure and maximize the view. Thick retaining wall courses along the plateau's edge to stabilize the building on its slope. Exterior stone cladding extends till the basement, eliminating the need for visible plinth protection. It expresses limits of building's intervention into the landscape, allowing it to be perceived as literally growing out of the ground.



91

Studio 4000



Location: Ahmedabad, Gujrat | www.studio4000.in
 Designer Incharge: Smit Vyas & Khushboo Vyas
 Design Team: Smit Vyas & Khushboo Vyas



WEST ELEVATION

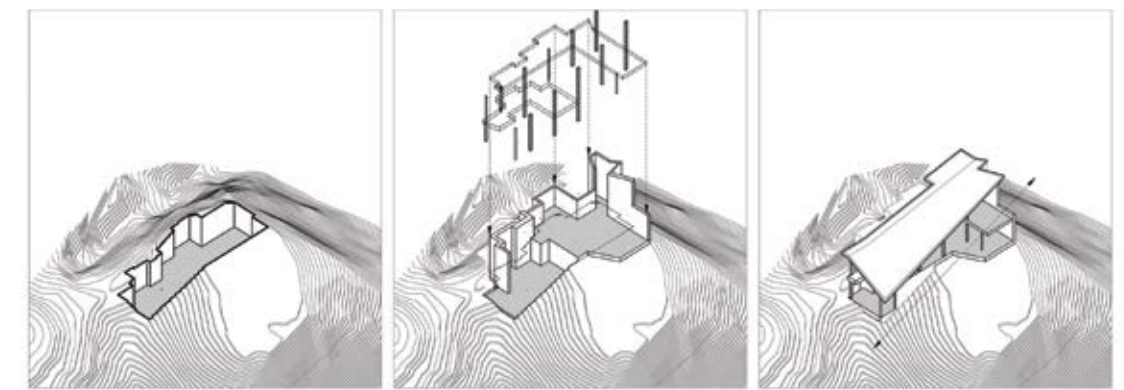


EAST ELEVATION

ELEVATION DETAILS

The undulating site is approached from the north and included a plateau- 15M from the water level towards its western edge. From here, the site sloped down eastwards as one approached the river's edge. The house's rectangular mass is pushed back and placed horizontally, with its longer side facing the river.

The house, swimming pool and water tower – are placed around the highest plateau. Across the valley, the swimming pool merges into the adjoining earth-mound along its slope. Further south, the masonry water tower rises from the highest point of the opposite hill. Exterior stone cladding extends to the basement, eliminating the need for plinth protection.

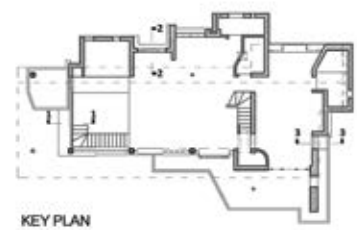
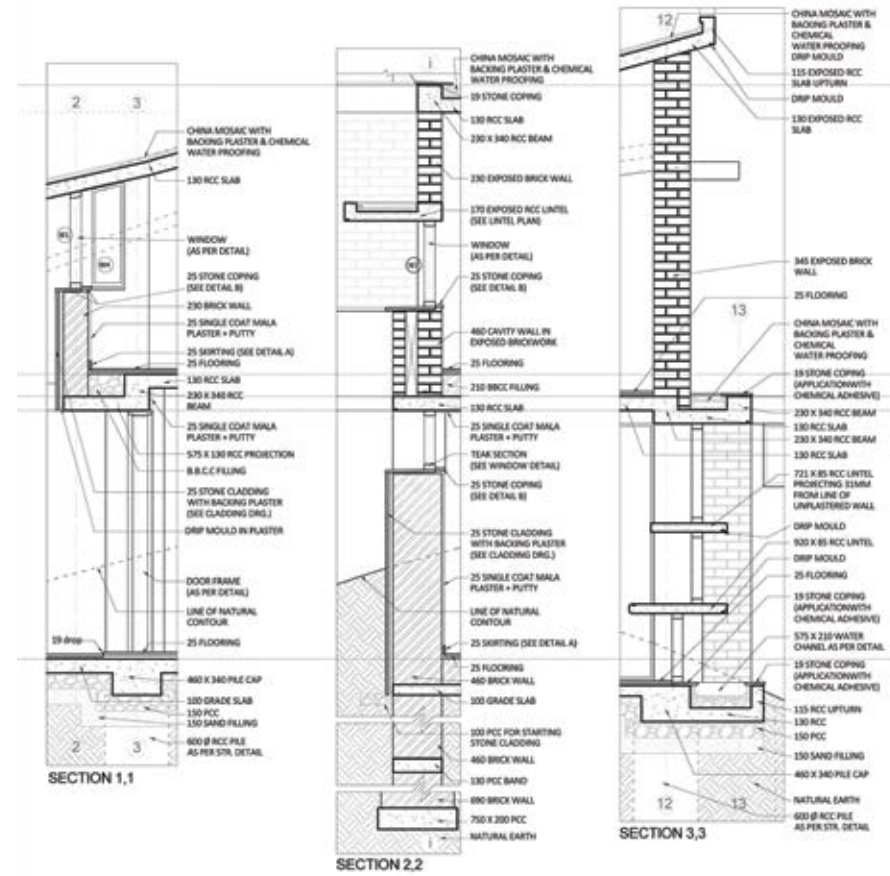


A rectangular void is scooped out of the ground at the plateau's edge - the work's dialogue with landscape commences with this inceptive act of the imminent built-form making an imprint into the topography.

Into this, floors, walls & columns (horizontal and verticals) are introduced to form the core of the house.

Finally, the hyperbolic paraboloid roof is modulated to follow the natural gradient of the ground below. Mirroring the landscape, it reintroduces the original shape of the hill- lost initially to construction- to envelop the entire house from above and characterize its spatial experience.

CONCEPTUAL DETAILS



WALL SECTION DETAILS

MATERIALS

- Flooring: Granite, In-Situ Terrazzo
- Wall Cladding: Mandana Stone
- Accessories & Interior Fixtures : Studio 4000
- Lighting Fixtures: Philips
- Kitchen Fixtures: Siemens
- Bath Fixtures: Kohler
- Furniture/Decor: Furniture By Studio 4000; Tapestry By Options Ahmedabad



A large columned hall, with an awning hyperbolic paraboloid, exposed RCC roof, is developed towards the river-facing edge.

The hyperbolic roof reinvents the original shape of the hill- lost initially to construction- to envelop the entire house enhancing its spatial experience.

LEGEND

Ground Floor Plan

- 1 Entrance
- 2 Living Room
- 3 Kitchen
- 4 Dining
- 5 Study
- 6 Bedroom
- 7 Deck
- 8 Toilet

